

MA TACHE



Une Création de la Cie O Quel Dommage, Conception et écriture: Clara Lopez

Jeu: Clara Lopez et Natalia Weinger, Mise en scène: Olivier Mahiant, Scénographie: Sandrine Clark,
Musique: Gilles Kremer, Lumières: Babas et Mark Elst, Conseiller Dramaturgique: Jean Lambert.

Avec l'aide la de Fédération Wallonie-Bruxelles et le CCBW. Avec le soutien de: La Cie de la Casquette, Le Théâtre du Tilleul, La Roseaie, le Service Culture de la Commune d'Ixelles, le Cc du Pays des Collines, Le Centre de la Marionnette de la FWB, Wolubilis, la Montagne Magique et le Petit Théâtre de la Grande Vie.

IN PRACTICE

from 4 years old

CASTING & MENTIONS

Concept and writing : Clara Lopez

Casting : Clara Lopez et Natalia Weinger

Directed by : Olivier Mahiant

Outside eye : Marie Limet

Scenography and costumes : Sandrine Clark

Music : Gilles Kremer

Lights : Sébastien André et Mark Elst

Drama advisor : Jean Lambert

Construction of the scenery structure : Didier Caffonnette

Produced by la Compagnie O Quel Dommage

with the help of the Walonie-Brussels Federation, theater department, the CCBW and Natalia Martinez.

With the support of la Cie de la Casquette, le Théâtre du Tilleul, La Roseraie, le Centre de la Marionnette de la FWB, la Commune d'Ixelles service culture, le Cc du Pays des Collines, Wolubilis, La Montagne Magique and Le Petit Théâtre de la Grande Vie.

Thanks to Bernard Senny, Vera Glez, Monica Varela, Céline Pelin, Vincent Raoult, Justine Moreau and Antoine Clette

Show created on April 21, 2017 at the Petit théâtre Mercelis in Brussels

Price :

Consult us

HD pictures are available on request (crédit © Bernard Boccara)

TOUR SEASON 2016-2017

Rencontres de Théâtre Jeune Public de Huy (BE)

August 23 and 24, 2017

www.oqueldommage.be

THE SHOW

You put the light on in a snap. It is and obeys you. Isn't it divine? From light arises the shadow. Our heroine Rita makes her playground out of it.

Today, on her birthday, strange things happen in her apartment. Her world is cold, clean, clear. Everything is perfectly mastered. Then, suddenly, a fuse blows and derails her daily routine. She loses control. Her imagination runs wild. Another person is inviting oneself to the party. Who is it? What is this person doing here? "Ma Tache" (My spot) is a visual, speechless journey where shadow is brought to light through play and the power of the imaginary.



© Line Lerho

THE STARTING POINT

« At every moment of the encounter, I discover in the other another myself. »

Roland Barthes

Since 2007, I work with autistic and psychotic children from 3 to 6 years old in theater workshops. One day I arrived with an overhead projector and I discovered all the richness of the interaction between the projected image and the acting. I started exploring the shadows with this technique which had the gift of captivating those children who sometimes are very difficult to access. Throughout this process, what struck me most was the playful relationship that these children had with their shadows, their way of meeting them as a part of themselves they cannot fully grasp but with which they can play. Since then, I have been dreaming and imagining situations.

The shadow as a character

We have thought a lot about the symbol that the shadow represented for us adults. But we eventually chose to let ourselves be carried along by the naive and playful perspective of childhood, since our show was above all else intended for children. The point of view of children was uttermost useful to us throughout the creative process. Groups of about 5 years old kids were regularly invited to attend performances of our work in progress.

We therefore opted for a bright shadow, playful and very open, like the imaginary characters of our childhood.

If the shadow is considered a character in its own right, it is above all a part of Rita who expresses herself. We no longer know very well whether it is a duet or a solo. The tracks are blurred... Rita will have to accept not to understand everything and finally let go, trust and allow the meeting.

« There is no light without shadow and no psychic totality without imperfection. Shadow is the personification of all what the subject refuses to recognize and admit in himself. » Carl Gustav Jung

Knowing how to "stay in the shadow", to "take your place in the light", to "illuminate the other", to "shade someone", are all expressions that inspired us and put us in the game. By playing with these symbols, we wish to offer the public strong, evocative, absurd and poetic images through a simple, tender, funny and accessible story.

Clara Lopez



© Bernard Boccara



© Line Lerho

THE THEMES

The relationship to oneself and to the other

During the show, our heroine and her shadow become tame, meet, seek, have fun, tease, rub, surprise, lose, find, accept, have fun,... and thus bring to light the relationship we have with ourselves and others. It tackles the themes of living together, loneliness, power, mourning and friendship in a sensitive, naive and playful way.

The loss of control

This show reminds us of what must be let go in order to enter fully into a relationship with others. It is literally this acceptance that our heroine will live throughout the show. Rita will gradually learn to let go despite her need to control everything to allow her to connect with her shadow, an imaginary friend as a transitional object with the outside world.

The imaginary friend

We consider the shadow character as an imaginary friend for our heroine, a fellow traveller whose presence invites her to play, create, imagine and connect with the outside world.

Pediatrician Donald Winnicott has worked on the interest of the transitional object which is the imaginary friend or the teddy for young children. This allows them to better live the maternal and family separation. It then acts as a reassuring companion, helping them to overcome their anxieties, their fears.

We found it interesting to consider the shadow as an imaginary friend because children are often afraid of darkness. Some of them (about 1 and half year old) may be very afraid of their own shadow. We wanted to reverse the codes, consider the shadow as an ally rather than as an enemy by learning to tame it and to hear what it has to say.

Loneliness and friendship

« Let's say "no" to all those who make us believe that we must fight to exist, because to be truly we must open ourselves to the other. » Albert Jacquard

Knowing how to be alone, without anxiety. Knowing how to have fun, to build, to create, to dream. Knowing how to take care of oneself, become autonomous. Knowing how to reconnect with oneself to go to the other. These are the reflections proposed by the character and her shadow.

How to accept the shadow part of others ? How to respect our own ? To play together is to confront the difference. It is accepting to be upset by the other.

The game, the competition, the power relationship

Shadow is an ideal opportunity to play with oneself. That is what Rita is doing throughout the show. If she does not play with her shadow, it is her shadow that plays on her. Mirrors, imitations, touch play, hide-and-seek, ... are games addressed in the show that reveal the stakes of power, competition, but

also sharing and mutual help.

Together, we can do many things that we can't do on our own. I accept the other, different from me. I discover qualities that I may not have. By imitating the other, I also discover new faculties, things that I did not think I could do or that I had never tried and I evolve... These are so many ways to learn through difference, amusement, curiosity, playfulness, but also through conflicting situations, errors, frustrations,...

Arouse imagination and creativity

By creating stories through images, playing with shadow, light, our show is also an invitation to create by oneself, to have fun with this material, to invent games and rules to express oneself, discover oneself. What a pleasure to see the children play with their shadow at the exit of the show !



© Line Lerho



© Bernard Boccara

cie **O** QUEL DOMMAGE

O quel dommage is a company created in 2010.

Justine Moreau and Clara Lopez (trained at the Conservatoire de Liège and at the Ecole International Lassaad de Bruxelles) are its artistic directors. This company explores a theatrical form where the body's commitment, gesture and voice are the fundamental pillars. Between popular tradition and innovative research, it offers a clownish, absurd and poetic theater that brings together spectators of all ages and nationalities.

Today the company has 4 shows on tour :

Les Pleureuses, Trio musico-clownesque for the general public.

Room service, Duo bouffonnesque for the general public from 8 years old.

Henri, Trio clownesque for the general public from 8 years old, street performance or black box.

Ma Tache, from 4 years old.

All our creations and extracts of these are available on our website :

www.oqueldommage.be



© Line Lerho

TECHNICAL RIDER

General Information

Duration : about 45 min.

Team

2 actresses

1 lighting/sound manager

Transport

Please provide a parking space near the venue during the installation and uninstallation.

Stage

The stage should be completely cleared before arrival of the technical team.

Floor : Black vinyl dance floor

Minimal stage dimensions :

Opening at the edge of the stage : 6m

Width : 8 m

Depth : 7,5 m

Height to lighting rig : 4 m

Black box

Total darkness is required.

Upstage : side pannels and taps.

Downstage : black legs and border .

(see light plot below).

Lights

1/General

The installation adapted to your theater will be carried out with the technical team of the company.

As far as possible, this technical rider can be adapted to your technical capacities. Please contact our technical manager to make sure that the desired modifications can be processed and that nothing stands in the way of the performance.

2/Requested equipment

Power box : 24x2kw circuits with DMX protocol

1 lighting console

11 PC 1000 or 500W

4 profile spots and stands

3/Company equipment

4 floor spots

4 LED desk lamps

1 Lenovo computer

Sound

1/Requested equipment

1 mixing table 4 in / 4 out with minijack cable to connect to computer

1 stereo equipment in the front

1 stereo equipment in the back

Assembly schedule

Schedule	Description	Requested staff
1st service	Unloading	1 operator
	Light and sound installation	1 light engineer
	Black box installation	1 sound engineer
	Scenery marking	
	Soundcheck	
2nd service	Focus, cue sheet	1 light engineer
		1 operator
3rd service	Run through	1 light/sound manager
4th service	Performance	1 light/sound manager

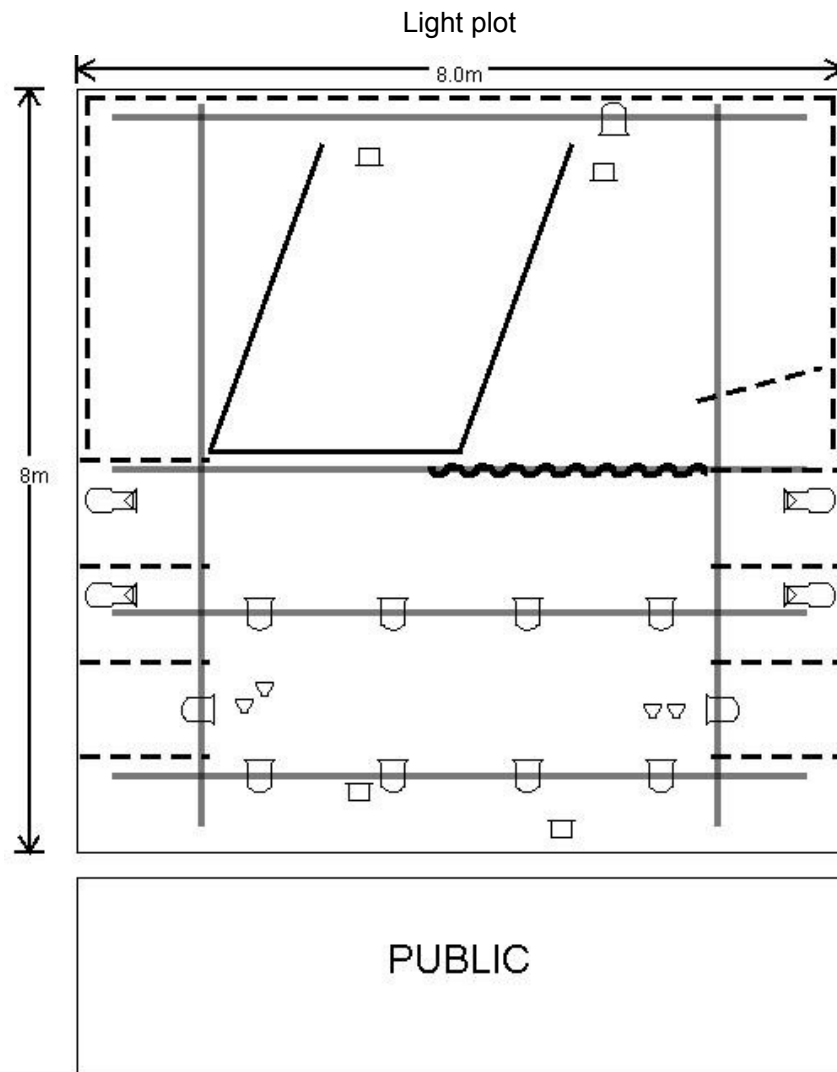
Warning ! This schedule does not take into account possible accessibility problems between the vehicle and the stage.

Uninstallation

Uninstallation and loading takes place at the end of the last performance. Provide 1 hour with 2 technicians.

Technical manager

Sébastien André
+32 497/421.982
visidfabud@gmail.com



- | | | | |
|-------|------------------|---|------------------------|
| — | Lighting rig | □ | PC |
| — | Screen structure | ◐ | Profile spot (+ stand) |
| ~ | Curtain | ◑ | Floor spot |
| - - - | Legs | ◒ | Desk lamp |

DISTRIBUTION

Christine Willem-Dejean

MTP Memap ASBL

0032 (0) 497579790

christinedejean@mptmemap.be

32 Avenue des Celtes B-1040 Bruxelles

Artistic director

Clara Lopez

0032(0) 484/07.93.97

oqueldommage@gmail.com

www.oqueldommage.be

O Quelle ASBL
Rue d'Enines 1a B-1367 Huppaye
n°d'entreprise : 0554780315