

# TECHNICAL RIDER

## General Information

Duration : about 45 min.

## Team

2 actresses

1 lighting/sound manager

## Transport

Please provide a parking space near the venue during the installation and uninstallation.

## Stage

The stage should be completely cleared before arrival of the technical team.

Floor : Black vinyl dance floor

Minimal stage dimensions :

Opening at the edge of the stage : 6m

Width : 8 m

Depth : 7,5 m

Height to lighting rig : 4 m

## Black box

Total darkness is required.

Upstage : side pannels and taps.

Downstage : black legs and border .

(see light plot below).

# Lights

## 1/General

The installation adapted to your theater will be carried out with the technical team of the company.

As far as possible, this technical rider can be adapted to your technical capacities. Please contact our technical manager to make sure that the desired modifications can be processed and that nothing stands in the way of the performance.

## 2/Requested equipment

Power box : 24x2kw circuits with DMX protocol

1 lighting console

11 PC 1000 or 500W

4 profile spots and stands

## 3/Company equipment

4 floor spots

4 LED desk lamps

1 Lenovo computer

# Sound

## 1/Requested equipment

1 mixing table 4 in / 4 out with minijack cable to connect to computer

1 stereo equipment in the front

1 stereo equipment in the back

## Assembly schedule

Schedule	Description	Requested staff
1st service	Unloading	1 operator
	Light and sound installation	1 light engineer
	Black box installation	1 sound engineer
	Scenery marking	
	Soundcheck	
2nd service	Focus, cue sheet	1 light engineer
		1 operator
3rd service	Run through	1 light/sound manager
4th service	Performance	1 light/sound manager

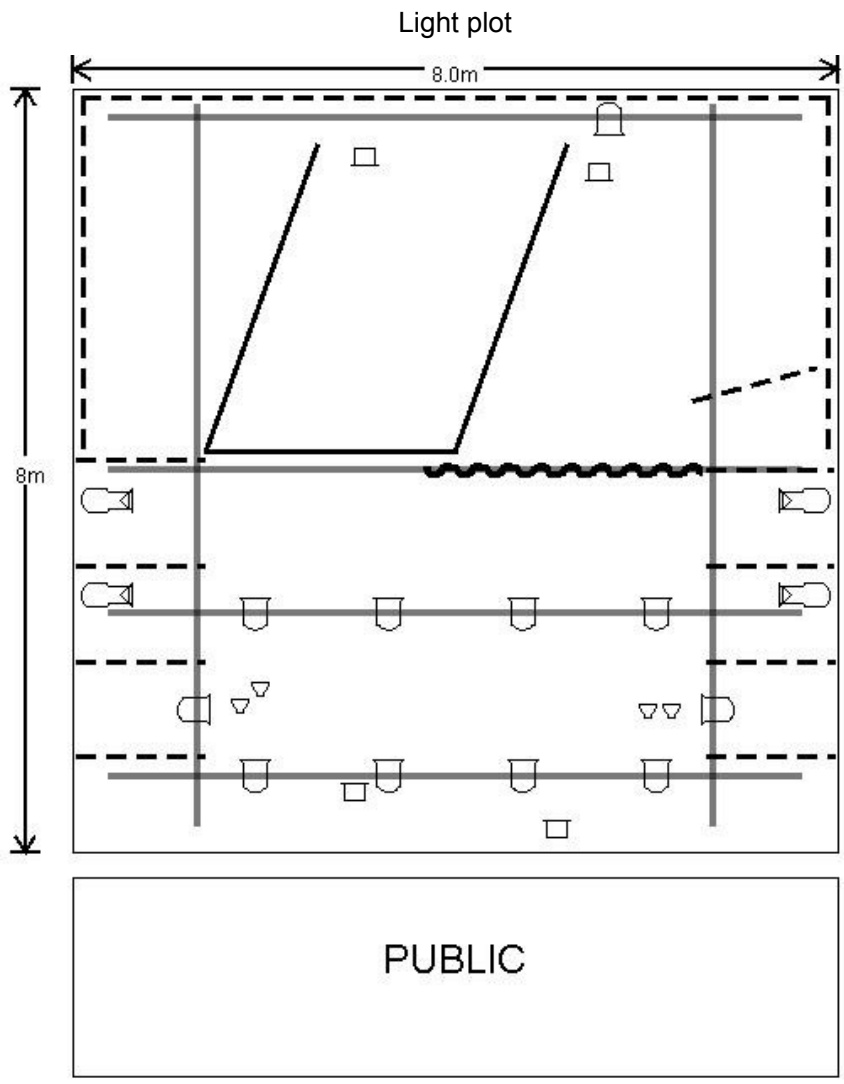
Warning ! This schedule does not take into account possible accessibility problems between the vehicle and the stage.

## Uninstallation

Uninstallation and loading takes place at the end of the last performance. Provide 1 hour with 2 technicians.

Technical manager

Sébastien André  
+32 497/421.982  
visidfabud@gmail.com



- |       |                  |   |                        |
|-------|------------------|---|------------------------|
| —     | Lighting rig     | □ | PC                     |
| —     | Screen structure | ◁ | Profile spot (+ stand) |
| ~     | Curtain          | □ | Floor spot             |
| - - - | Legs             | ◁ | Desk lamp              |

## DISTRIBUTION

Christine Willem-Dejean

**MTP Memap ASBL**

0032 (0) 497579790

christinedejean@mptmemap.be

32 Avenue des Celtes B-1040 Bruxelles

Artistic director

Clara Lopez

0032(0) 484/07.93.97

oqueldommage@gmail.com

[www.oqueldommage.be](http://www.oqueldommage.be)

© Quelle ASBL  
Rue d'Enines 1a B-1367 Huppaye  
n°d'entreprise : 0554780315